

3 Generations of SIZZLE

Past
Present
Future



**Burket-Falls Sizzle-Red
NOW EX-93**

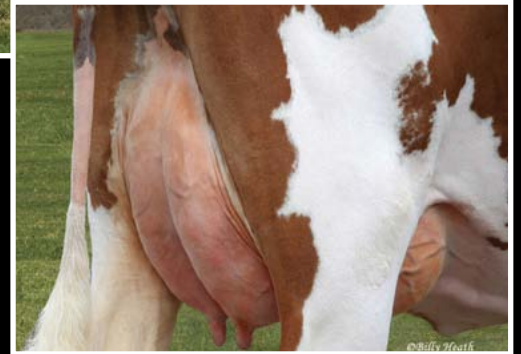
3-11 2X 365D 40,391M
3.5% 1413F 3.0% 1195P
Sire: Starstruck J Paradox-Red
Dam: Burket-Falls Convincer
Saphira-RC EX-92-2E GMD

**Dam of
Burket-Falls 1605 P-Red-ET**

**Homozygous
Polled**

**All calves resulting
from a Homozygous
Polled male or female
will be POLLED!**

**Burket-Falls 1605 PP-Red-ET
GP-83-2Y VG-MS**
2-01 2X 212D 18,697M 4.4% 822F 3.2% 600P inc.
Homozygous POLLED
Sire: Aggravation Lawn Boy P-Red
Dam: Burket-Falls Sizzle-Red EX-91 (top right)
Dam of Burket-Falls Signif 1717 PP-Red-ET



Burket-Falls Signif 1717 PP-RC

Homozygous POLLED

Sire: Burket-Falls Significant at Genex

Dam: Burket-Falls 1605 PP-Red-ET GP-83-2Y VG-MS (above)

Homozygous Polled Bulls

**Dominant PP-Red (Pledge x Polled Party)
Available from Burket-Falls**

**Logo PP-Red (Lypoll x Marmax)
Available from GGI/Ag Link**

**Premium PP-Red (Lawn Boy x Paradox)
Available from GGI/Ag Link
Full Brother to 1605 PP-Red**

POLLED FOUNDATION COW



Burket-Falls Elevation Sophia (EX-93-4E)
Lifetime: 241,534 4.1% 10,022 (GM-DOM)
Sire: Elevation
"The Solid foundation of our Polled Program"



The Solution to Your "Horny" Problems

Burket Falls Farm

Dave Burket & Sons

1321 Polecat Rd • East Freedom, PA 16637

Ph: 814-239-2260

www.burketfallsfarm.com